

Date of incident:	08.12.2023	Incident type:	High Potential Near Miss (HiPo)
Incident ref:	iSMS - 682856	Contractor:	SB3JV
Location:	Old Oak Common	Issued by:	
Keyword Search:	Lifting Operation		

Summary of Incident

A CFA bored pile had been drilled and the lifting team were preparing to lift a central reinforcement bar, ready for installation. A restricted zone was established around the crane and the cage/bar storage area to prevent unauthorised access.

The slinger signaller screwed the lifting head onto the 13m length central bar and used a hammer to ensure the lifting head was securely in place.

The slinger signaller requested the crane driver, to lift the bar from the horizontal position on the trestle, to a vertical position. Once in the vertical position, with the bottom of the bar just above ground, the slinger requested the crane driver to lift in order to move the bar to the pile location. The bar detached from the lifting head in its vertical position and fell onto the SB3 stores container within the restricted zone.

The slinger was the only operative within the restricted zone while the lift was taking place.

Initial Findings

- No manufacturer's details or information on the use of the single bar lifting head had been provided.
- The lifting head was a proprietary coupler that has been adapted by the reinforcement supplier for bar lifting purposes. The coupler manufacturer states that it cannot guarantee a load if imposed on them in the horizontal position.
- Specific job training for attaching the lifting head had not been given to the slinger signalers.
- No mechanical failure of the rebar lifting head, or the threaded rebar, has been identified.
- A single bar lifting clamp had been designed specifically following a previous incident with similar findings.
- A secondary backup sling arrangement that was used when working alongside a Network Rail asset was not utilised once the piling works moved into the centre of the site away from the railway.
- The lift plan did not reference the specific lifting accessory in detail.

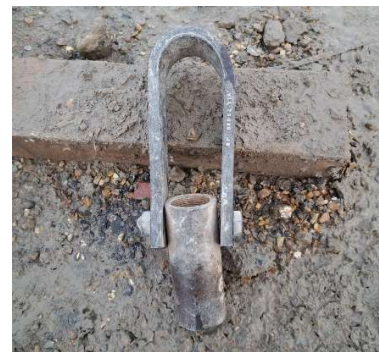
Actions

- All 'Rebar Lifting Heads' are to be taken out of use and quarantined until further notice.
- 'Single Bar Lifting Clamps' are to be introduced as the alternative method of lifting and placing reinforcement bar.
- A secondary sling must be attached to the bar/hook and that this is recorded in the lift plan & risk assessment.
- All slingers are trained in the pre-use checks, inspection and fitting of the single bar lifting clamp.
- The Task Briefing Sheet must be updated to include the specific fitting and installation instructions.
- The lift plan and associated documentation must be updated to include the single bar lifting clamp.
- A hold point must be put in place at the point of attaching the lifting accessories to the crane.
- To ensure that the bulldog grips are correctly torqued up to the bar/lifting clamp.
- All Appointed Persons developing lift plans for these types of activities are included in the lessons learned.
- All sites carrying out similar single bar lifting activities are informed and that the single bar lifting clamp is readily available.
- The lessons learned is shared with the Federation of Piling Specialists to communicate around the industry.

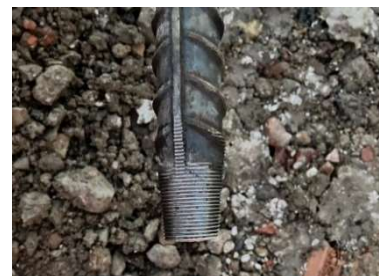
Photographs



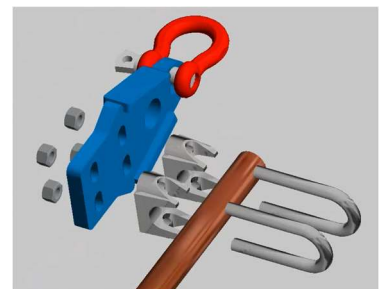
Bar came to rest on container



Rebar Lifting Head



Rebar with threaded end



Single Bar Lifting Clamp